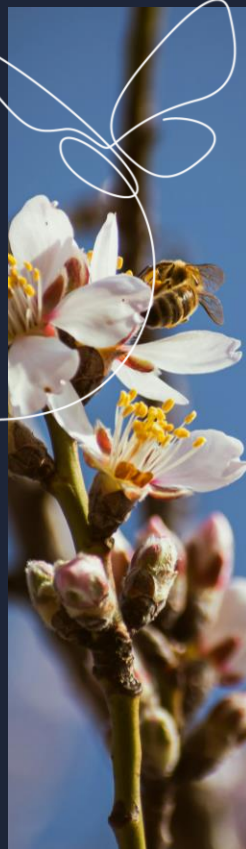




2024

ROOTED TOGETHER
THE ALMOND CONFERENCE





ROOTED TOGETHER
THE ALMOND CONFERENCE

Pollinator Habitat: What You Need to Know About Endangered Species

Moderator: Josette Lewis (ABC)

Speakers: Ashleigh Blackford (US Fish & Wildlife),
Billy Synk (Pollinator Partnership),
Erin Arnsteen (Monarch Joint Venture),
Stetcyn Maldonado (Project Apis m.)





ROOTED TOGETHER
THE ALMOND CONFERENCE

**Pollinator Habitat:
What You Need to Know
About Endangered Species**

Billy Synk (Pollinator Partnership)





**POLLINATOR
PARTNERSHIP**

Protect their lives. Preserve ours.

Resources for Establishing Pollinator Habitat

*The Almond Conference
December 10, 2024*

Kelly Bills, Executive Director

kelly@pollinator.org

www.pollinator.org

POLLINATOR PARTNERSHIP

Protect their lives. Preserve ours.

Pollinator Partnership's Mission is to promote the health of pollinators, critical to food and ecosystems, through conservation, education, and research.



NRCS Regional Conservation Partnership Program

CALIFORNIA AG-LAND NETWORK
(CAN) FOR POLLINATORS

**POLLINATOR
PARTNERSHIP**



Goals and Objectives

- Increase pollinator habitat and forage
- Creation of pollinator corridors on neighboring farms
- Increase IPM adoption
- Implement models to demonstrate ecological, social, economic benefits
- Use this program as a model for future projects

Funding Request and Included Practices

595 - Pest Management

422 - Hedgerow Planting

420 - Wildlife Habitat Planting

340 - Cover Crops

645 - Upland Wildlife Habitat Management

327 - Conservation Cover

528 - Prescribed Grazing

Financial Assistance Total \$1,206,230.20



**POLLINATOR
PARTNERSHIP**



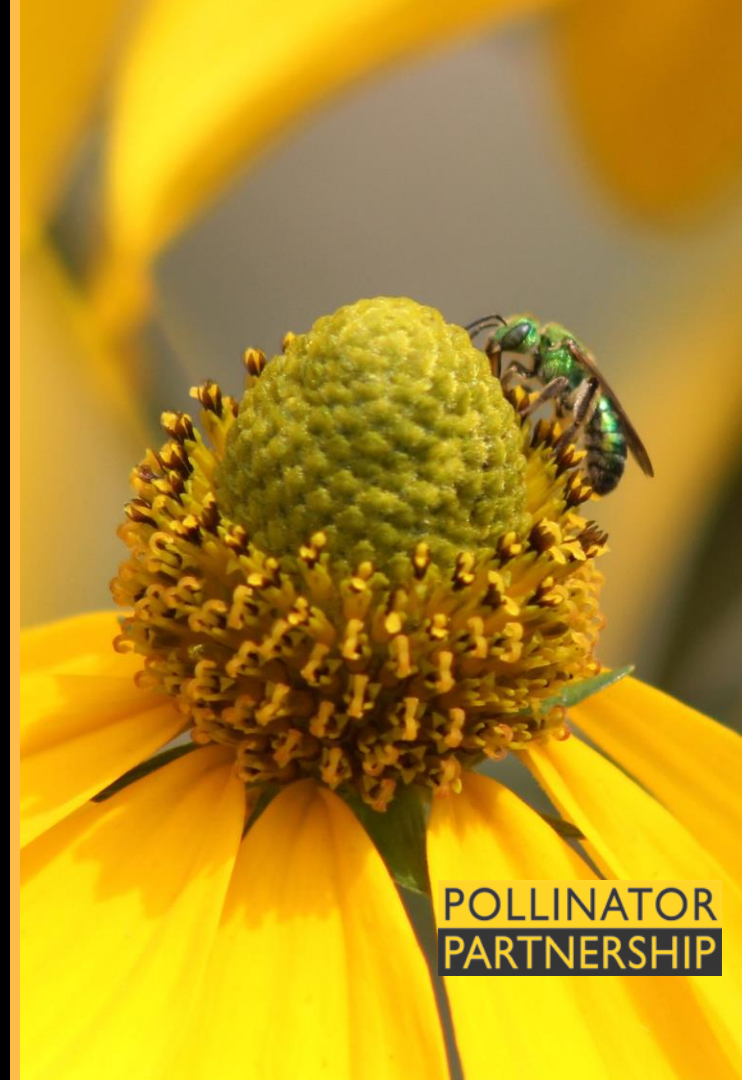
Pollinator Partnership
Almond Board of California
Bayer + Monarch Watch
California Dairies Inc
Wine Institute + Sustainable Wine
Growing Alliance
California Cattlemen's Assoc.
CA Farm Bureau
Project Apis m
Blue Diamond Growers
Neal Williams + Eric Lonsdorf

PROJECT PARTNERS

**POLLINATOR
PARTNERSHIP**

Progress and Next Steps

1. Approval of Financial Assistance
Funding request
2. Rank/ enroll small number of growers
3. Implementation testing in Fall 2024
4. Enroll 20 producers in 2025 and 2026
each



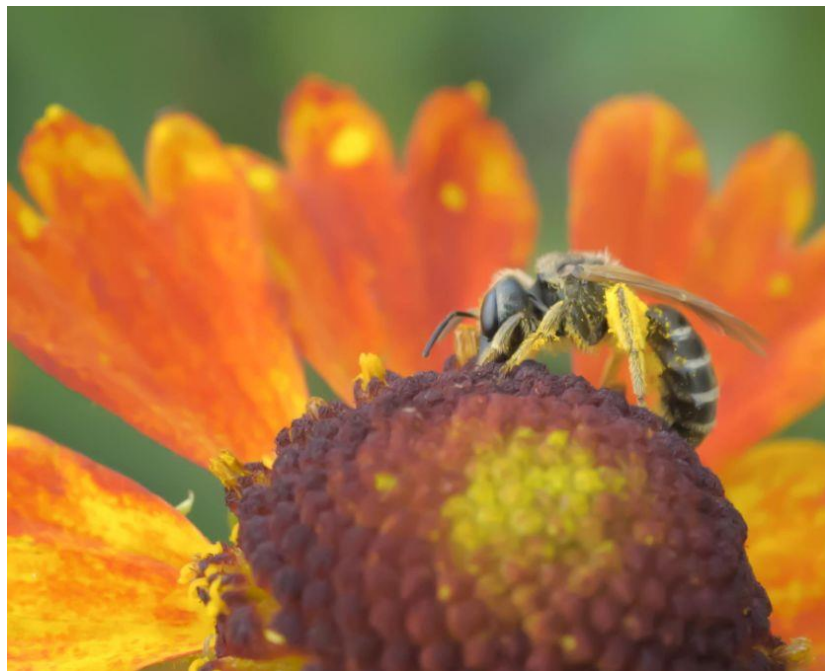
POLLINATOR
PARTNERSHIP



CDFA Pollinator Habitat Program (PHP)

ENHANCED FARMLAND FOR
POLLINATORS, CROPS, AND
SOIL

**POLLINATOR
PARTNERSHIP**



CDFA PHP

- Focusing on recently fallowed farmland due to drought
- Replacing weedy/ fallowed land with habitat to support pollinators and mitigate pests
- \$1.64 million will go directly to farmers to implement this program
- Over 2,100 acres will be enhanced

**POLLINATOR
PARTNERSHIP**



CDFA PHP

- With our partners, Community Alliance with Family Farmers and Wild Farm Alliance, we are working with farmers throughout CA on:
 - Hedgerows
 - Conservation cover
 - Cover crop
 - Field border
 - Tree and shrub establishment
 - Wildlife habitat planting
 - Integrated pest management

**POLLINATOR
PARTNERSHIP**



Monarch Wings Across America

Monarch Wings Across America (MWAA) is a multi-project initiative that creates habitat and refines science around monarch butterfly issues in the United States across both its eastern and western populations.



Monarch Wings Across the California: Almonds

- 12 participating growers
- 10 site plans issued
- 10,000 acres impacted
- 114 lbs. of native nectar seed
- 25,993 native plants
- 30 lbs. of milkweed seed
- 2,888 milkweed stems



**POLLINATOR
PARTNERSHIP**



Bee Friendly Farming

Partnering with Farmers

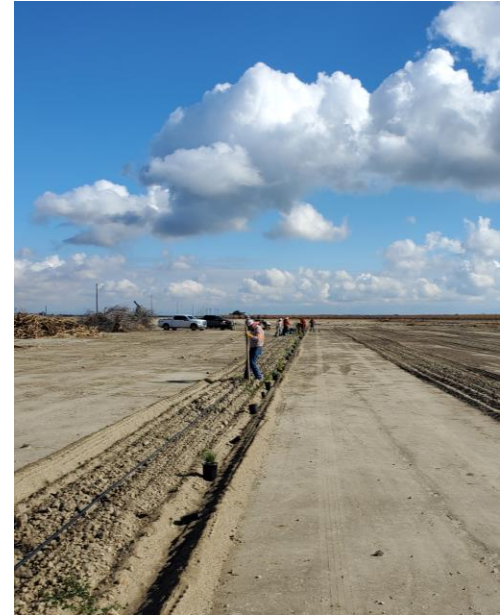




Bee Friendly Farming

- 790 certified farms
- 372,837 property acres
- 161,693 habitat acres
- These practices provide numerous agronomic, ecological, and social benefits
- NEW Third Party Verified option
 - Use of BFF Logo on packaging and marketing material





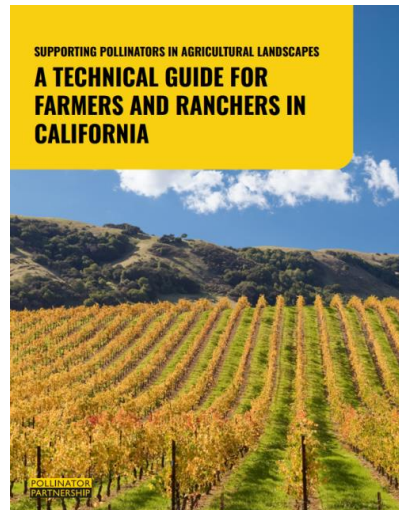
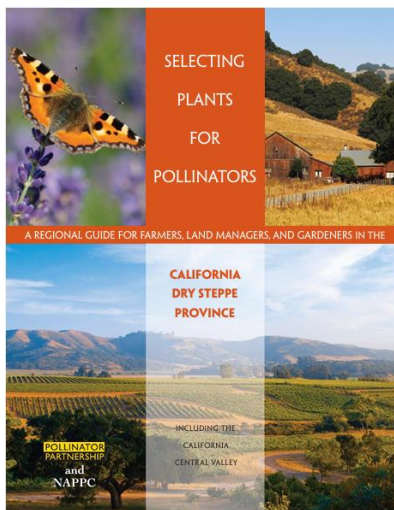
Pollinator Partnership Consulting Services
consulting@pollinator.org

**POLLINATOR
PARTNERSHIP**



Pollinator Partnership Consulting Services

- Individualized and site-specific technical assistance
- Detailed information on site preparation and planting
- Provide Habitat Implementation Site Plan which includes, species list, task timeline chart, and irrigation schedule
- Procure plant material from nursery
- Management and maintenance planning
- And more!



POLLINATOR PARTNERSHIP
QUICK REFERENCE GUIDE



**NATIVE AND NON-NATIVE PLANTS
FOR POLLINATOR SUPPORT**

POLLINATOR PARTNERSHIP
FROM THE BEE FRIENDLY TOOL KIT

Planting plants that bees, butterflies, and other pollinators need can help save pollinators and create a healthy environment for future generations.

When creating a pollinator garden or adding plants to your balcony or yard, selecting plants deliberately to support pollinators can help you beautify your area and also create a buzzing paradise for pollinators.

Plants can be grouped into two main types:

1. **Native plants:** plants that have been present on the landscape since before human intervention.
2. **Non-native plants:** plants that have been introduced, either deliberately or accidentally, usually by humans.

Let's take a closer look at non-native plants, as some can be great for pollinators and others are detrimental.

Types of Non-Native Plants

1. **Crop, garden, and ornamental plants:** those that we grow for food or for beauty, such as apples, lavender, and roses. They usually have been often modified from their natural state, by people, to better provide food or aesthetic appeal.
2. **Invasive plants:** those that are known to invade natural areas, causing harm to human health or the environment. Some garden and ornamental plants, that were brought to North America by settlers, are now known to invade natural areas. These plants can sometimes have a competitive advantage in their new range because they are released from the predators, diseases, and competitors in their native range. They can take over natural areas, crowding out native plants. This can have a devastating effect on pollinators, native plants, and entire ecosystems.

Selecting plants native to your region will provide the most benefit to pollinators and the environment. As long as you are careful to avoid invasive plants, interweaving some of your favorite non-native plants can have a positive impact. Invasive plants should never be used in pollinator gardens and should be removed when possible.

www.pollinator.org

www.pollinator.org

**POLLINATOR
PARTNERSHIP**



**POLLINATOR
PARTNERSHIP**

Thank you

www.pollinator.org / info@pollinator.org



ROOTED TOGETHER
THE ALMOND CONFERENCE

**Pollinator Habitat:
What You Need to Know
About Endangered Species**

Erin Arnsteen (Monarch Joint Venture)



Monarch Joint Venture: Monarchs and More Western Habitat Program

Presented by Erin Arnsteen



MONARCH
JOINT VENTURE



Erin Arnsteen

Western Program Coordinator
Monarch Joint Venture





MONARCH JOINT VENTURE



Partnerships

Habitat

Education

Science





An Overview of Western Collaborations

1. Bureau of Land Management
2. Department of Defense
3. California Association of Resource Conservation Districts
4. ***Monarchs and More:***
Western Habitat Program
5. **Integrated Monarch Monitoring Program**





Monarchs & More Western Habitat Program



The *Monarchs and More* Western Habitat Program (M&MWHP) provides...

- **regionally specific wildflower seed mixes**
- **milkweed plugs when appropriate**
- **technical assistance**

...with a special focus on private working lands.

Program Eligibility:



Located in
**California or
Southern Oregon**



Sites must be
1/4 acre or more



Complete **site
preparation**



Maintain habitat
for **3+ years**



Monarchs & More Western Habitat Program

M&MWHP offers **free or highly subsidized plant materials** and technical assistance, based on land steward need.

Seed mixes include **regionally specific wildflowers**, including annuals and perennials, designed with **overlapping bloom periods** throughout the growing season.



MONARCH JOINT VENTURE				
Monarchs & More Western Habitat Program				
2022 - 2023 Seed Mix Plant ID				
■ Early Season Bloom ■ Mid Season Bloom ■ Late Season Bloom				
SEED	SEEDLING	LEAVES	FLOWER	FULL PLANT
<i>Chrysopsis glaberrima</i> Yellow Ironweed	<i>Chrysopsis glaberrima</i> Yellow Ironweed	<i>Chrysopsis glaberrima</i> Yellow Ironweed	<i>Chrysopsis glaberrima</i> Yellow Ironweed	<i>Chrysopsis glaberrima</i> Yellow Ironweed
<i>Collinsia heterophylla</i> Mexican Shasta	<i>Collinsia heterophylla</i> Mexican Shasta	<i>Collinsia heterophylla</i> Mexican Shasta	<i>Collinsia heterophylla</i> Mexican Shasta	<i>Collinsia heterophylla</i> Mexican Shasta



Monarchs & More Western Habitat Program



Habitat Monitoring

Participants are encouraged to contribute data from these projects to community science programs.

Land stewards and MJV staff monitor sites using programs such as (but not limited to):

- IMMP
- Monarch Larva Monitoring Project (MLMP)
- Western Monarch Milkweed Mapper
- iNaturalist
- ...and more



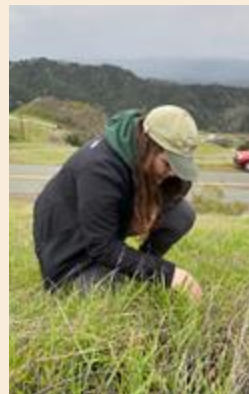
Integrated Monarch Monitoring Program

Integrated Monarch Monitoring Program (IMMP)

The IMMP is a national community science program which collects milkweed, nectar plant, and monarch use data from various land-use types and regions.

At each site, Field Technicians conduct

- Milkweed and Blooming Plant Surveys
- Egg & Larval Surveys





Monarchs & More Western Habitat Program



Sign up to receive more information about the Monarchs and More Western Habitat Program here:

<https://bit.ly/WesternHabitat>

Or scan here:









ESA Listing Decision Resources



ESA Listing Resources can be found at www.monarchjointventure.org:

- Migratory Monarch Protections and Listing Status
- United States Endangered Species Act Status
- ESA Listing Toolkit for land managers:
<https://farmersformonarchs.org/endangered-species-act-listing-decision/>

www.monarchjointventure.org

Photo: Aimee Olson





MONARCH JOINT VENTURE



Unique Places
To Save





Contact Us

Erin Arnsteen:

erin@monarchjointventure.org

General Inquiries: ***info@monarchjointventure.org***

Science: ***monitoring@monarchjointventure.org***

Habitat: ***habitat@monarchjointventure.org***

Education: ***education@monarchjointventure.org***

Partnership: ***partnership@monarchjointventure.org***

visit monarchjointventure.org

Learn more :





Questions?





2024

ROOTED TOGETHER
THE ALMOND CONFERENCE

**THANK
YOU**

ALMOND BOARD OF CALIFORNIA